

MAY 19-SEPTEMBER 24

A Pioneer in Fiber Arts Revisits Her Formative Influences in Claremont

The Claremont Lewis Museum of Art will present the work of Ferne Jacobs, a pioneer in fiber arts who creates unique three-dimensional sculptural forms using ancient basket-making techniques. *Ferne Jacobs: A Personal World* will feature a broad selection of her sculptures as well as books of her psychological drawings and collage diaries. The exhibition will open with a member preview on Saturday, May 20, at 5:00 p.m. followed by the opening reception from 6:00 to 8:00 p.m.

This exhibition is drawn from and expands upon the Craft in America survey exhibition, *Building the Essentials: Ferne Jacobs* in 2022. CLMA's 2023 exhibition, curated by Seth Pringle and Emily Zaidan, will present a comprehensive selection from her 50 years of artmaking. The exhibition, generously sponsored by June and Simon Li, will remain on view through September 24, 2023.



Ferne Jacobs,
Flight, 2011.
Photo: Craft
in America,
Madison
Metro.

Jacobs began her work in fiber at the Claremont Graduate University in the 1970s. This exhibition is an effort to deepen our knowledge and appreciation of her art by bringing it back to Claremont in the company of works by some of the artists who have influenced her, and a selection of objects she has collected that give insight into her creative vision.

2022 HIGHLIGHTS EXHIBITIONS & PROGRAMS

4 Exhibitions

6,669 Museum visitors

1,725 ARTstART participants

1,030 Art Fiesta attendees

7,567 Video views



PRESIDENT'S MESSAGE

Museum Achieves Major Milestones

The Claremont Lewis Museum of Art is excited to start off 2023 with a bang. We just came off an incredible year of growth for the Museum, and achieved several key milestones that are certainly worth celebrating! The Museum has expanded into two additional gallery spaces, doubling our usable footprint to show amazing works of art, as well as provide quality programming for the community and our members. We also achieved a long desired goal of creating an endowment, made possible by the incredibly generous gift and support of the Randall and Janell Lewis Family. Their \$1 million contribution allowed us to establish The Lewis

Endowment, and take that very important step toward building the financial stability of the Museum for many years to come.

We also successfully completed the fundraising campaign for Gallery 1, which will now be known as the Marguerite McIntosh Gallery, inspired by and named for the visionary founder of our Museum. And we hosted our largest and most successful Gala to date.

Growth of the Museum requires growth in operations. We recently hired two fantastic museum managers, Seth Pringle and Ingrid Borgards, who have added an incredible amount of knowledge, *(continued on page 2)*

Milestones *(continued from page 1)*

professionalism, and skill to our team.

Over the past year we have greatly increased our collection of exquisite art pieces, and we are excited to be able to share them with the public in future exhibitions.

Project ARTstART continues to serve thousands of Claremont students with art education, and art making opportunities. Stay tuned for our Project ARTstART exhibition coming May 5-7 where we will showcase imaginative creations by the students themselves.

Going forward we will have four amazing exhibitions to showcase in 2023, some of which are already receiving widespread recognition and praise, that span a variety of media and themes.

We wouldn't be where we are today without the incredible support of our Claremont and neighboring communities, as well as our valued members and donors. We look forward to continuing to enrich the lives of those who visit us with unique artistic experiences, and we are excited to see you at the Museum!

— Ryan Zimmerman, President

2022 HIGHLIGHTS MUSEUM GROWTH

- \$1,000,000** Lewis endowment gift
- \$75,000** McIntosh gallery campaign
- 2** Additional galleries opened
- 2** Managers hired
- 60** Artworks added to the collection

Randall Lewis speaks
at Fall Gala.

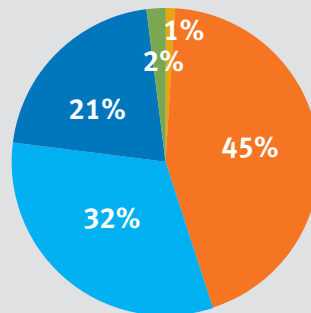


TREASURER'S REPORT

Endowment Gift Secures Financial Future

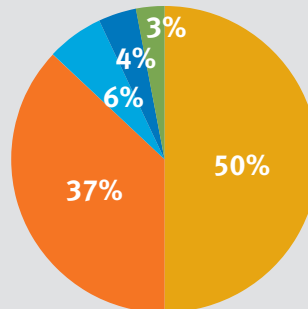
Revenue for 2022 was \$945,446, a 139% increase over 2021 thanks to the Lewis Endowment Gift, the naming of Gallery 1 for Marguerite McIntosh, grants from the Ruth and Joseph Reed Foundation for the Arts for Project ARTstART and additional donations from our generous donor base. In May 2022 the Museum opened Galleries 2 and 3 doubling the size of the Museum space which required additional staffing and exhibition expenses. However, 2022 expenses were contained to \$415,374, allowing for an increase in Net Assets of \$530,072. The Museum now has over \$1 million in Net Assets, insuring a strong financial foundation for the future — *Rae Rottman, Treasurer*

2022 NET ASSETS



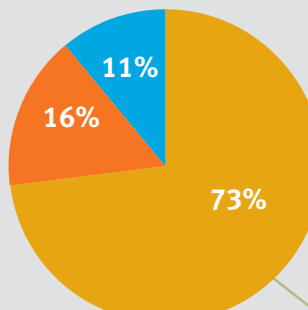
- CASH with Donor Restrictions** 1%
- CASH without Donor Restrictions** 45%
- INVESTMENTS with Donor Restrictions** 32%
- LEASEHOLD IMPROVEMENTS (NET)** 21%
- OTHER CURRENT ASSETS** 2%

2022 TOTAL REVENUE



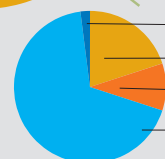
- DONATIONS** 50%
- ENDOWMENT** 37%
- ADMISSIONS/SALES** 6%
- MEMBERSHIPS** 4%
- GRANTS** 3%

2022 EXPENSES



- PROGRAMS** 73%
- GENERAL & ADMINISTRATIVE** 16%
- FUNDRAISING** 11%

2022 Program Expense Breakdown



- Padua Hills Fiesta** 2%
- Art Education** 20%
- Collections Management** 10%
- Museum Operations & Exhibitions** 68%

THROUGH APRIL 23

Andrée M. Mahoney Seeks Transcendence in Color and Form

Andrée M. Mahoney: Spirit Voyager currently on view celebrates the artist's seventy-year exploration of the richness of life through mixed-media painting and ceramic sculpture. A visual storyteller on a lifelong, transcendental quest to transform spirit into matter, Mahoney seeks to strike a balance between color and form, intuition and meaning.

In *Spirit Voyager*, Andrée takes her audience on a journey through universal symbols and metaphors that navigate land, sea, and sky to connect with the cosmos through her sensuous view of the world. Her work is equally grounded in feminist ideology. Andrée came to Claremont in 1950 to study art at Scripps College, honed her skills in the Millard Sheets Studio, and earned her M.Ed and MFA from CGU. She was a Professor of Art at Chaffey College for more than 30 years.

The exhibition, curated by the artist's daughter Monica Lynne Mahoney and generously sponsored by Gould Asset Management LLC, will remain on view through April 23, 2023.



Vince Skelly's
Humpback Chair is carved
from old growth redwood.

THROUGH APRIL 23

Vince Skelly Transforms Wind Ravaged Trees into Powerful Sculptures

Vince Skelly: A Conversation with Trees presents recent work by Claremont artist Vince Skelly. Carving tree trunks, many harvested in the aftermath of the epic wind storm of January 2022, Skelly explores the space between sculptural form and functional object.

Born in 1987, Vince Skelly grew up in Claremont in an artist family and

APRIL 1

A Conversation About Trees: Art, Wood, and Sustainability

A special program will be held at the Museum on Saturday, April 1 at 4:30 p.m. Presented in collaboration with Sustainable Claremont, a discussion panel will use Vince Skelly's sculpture exhibition as a launching point to talk about the epic windstorm of January 2022, eco-friendly art-making and arboreal memory. Panelists will include artist Vince Skelly, Sustainable Claremont Director Stuart Wood, and artist/Pomona College Professor Michael O'Malley.

recently returned to live and work in his hometown. Combining process, collective memory, and material, Skelly works reductively to shape each stool, chair, or abstract form from a single block.

The storm offered not only a sustainable source of wood, but also an opportunity to create new life out of incredible destruction and loss. Interest in Skelly's work has exploded recently with an article about the CLMA exhibition in the Style section of the *New York Times* and numerous online design newsletters.

The exhibition, generously sponsored by Gould Asset Management LLC with additional funding from West Coast Arborists, will remain on view through April 23, 2023.



Andrée M. Mahoney:
Spirit Voyager is on
view in Gallery 3
through April 23.

Thanks to our Gala Sponsors

Platinum Lead Sponsor

Patricia A. Lobello

Lobello Lamb Lewis & Riley LLP

Gold Sponsor

Claremont Lincoln University

Silver Sponsors

Jay & Victoria Greening

VMA Communications

Ahlene Welsh



Claremont Lewis Museum of Art

BOARD OF DIRECTORS

Susan M. Allen, Ph.D

Sandy Baldonado, *President Emerita*

Aurelia Brogan

Barbara Brown, *Emerita*

Susan Guntner

Juliet Kane

Valerie Martinez

Catherine McIntosh

Marguerite McIntosh, *President Emerita*

Emily Moultrie, *Secretary*

Dr. Janet Myhre, *Emerita*

Sheri Nagel, *Vice President*

Marilyn Ray, *Emerita*

Rae Rottman, *Treasurer*

Elaine Turner, *Past President*

Joseph "Joe" Unis M.D.

Mary Weis, *Emerita*

Ryan Zimmerman, *President*

Harold B. "Hal" Nelson, *Special Advisor*

Claremont Lewis Museum of Art
P.O. Box 1136, Claremont, CA 91711

info@clmoa.org
909 621-3200

The Claremont Lewis Museum of Art is a non-profit, tax exempt 501(c)(3) charitable organization. Our exhibitions and programs are supported by public and private organizations as well as many individual donors, members, and volunteers.

CLMA Evolves in Management and Governance

As our gallery space has grown so has our need for professional management in operations and exhibitions. Ingrid Borgards has been named as the Administrative Manager and Seth Pringle is now the Associate Director of Exhibitions and Collections. Museum director Adrienne Luce has departed to take on an expanded role with HMC Architects and the Board is in the process of seeking a new Executive Director.

Transitions are also taking place in the governance of the Museum. Ryan Zimmerman is the new president of the CLMA board of directors replacing Elaine Turner who served in that role for five years. Sandy Baldonado, Marilyn Ray and Mary Weis have been honored with Emerita status after serving multiple board terms, contributing to the success of the museum for over a decade. We are pleased to announce that Valerie Martinez and Emily Moultrie have joined the board bringing their areas of expertise to CLMA.



Valerie Martinez

Valerie Martinez is a longtime Claremont resident, with two grown children and four step/bonus children. She has appreciated art and the work of artists all her life and became an avid art collector in her 30s.

She is the President/CEO of VMA Communications, a public affairs firm based in Claremont, which provides community outreach and P.R. services to public school

districts, as well as water and transportation agencies across the State. Prior to starting VMA, she ran the California Latino Legislative Caucus, supporting equity in education and healthcare, and progressing a social justice-focused legislative agenda. She began her career working as a news reporter for the Los Angeles Herald Examiner and the Long Beach Press-Telegram.

"Art and music are embedded in the culture of our Claremont community," she said. "From Milford Zornes and Sue Hertel to Norma Tanega and Harrison Macintosh – CLMA is the embodiment of Claremont's commitment to the arts. It has become an extraordinary community asset. We need to support it and nurture the creatives in our community."



Emily Moultrie

Emily Moultrie grew up in Claremont and has been part of the small business community for decades. Opening Claremont Craft Ales in 2012, she has supported the town by providing a welcoming tasting room and devoting her time and efforts (and beer!) to Claremont's non-profit organizations. She has been active with the Claremont Chamber of Commerce, serving as Chair of the board and

continues to serve as a member of Claremont Sunrise Rotary and sponsor of many of Claremont's beloved charitable institutions.

A lifelong performer who received her BA in Cinema-Television from University of Southern California, Emily understands how vital artistic expression can be for the community. She is so pleased to join the board and is looking forward to expanding her knowledge and using her talents to serve the Museum.

FEBRUARY 22, 1935 - MARCH 10, 2023

Sandra Baldonado: Champion of the Arts

How do you capture the essence of a woman who has meant so much to so many? A force of nature, a role model, a mentor, and a good friend, Sandy has been an important part of the fabric of life in Claremont for decades.

Sandy was born in Shanghai, graduated from Smith College, and worked for Senator Lyndon Johnson in Washington, DC, where she met her first husband. They moved to Los Angeles, then Claremont and had four children. Sandy became an active community volunteer and taught elementary school. She went to law school in her 40s, opened a law office in Claremont in 1983, and practiced law until 2018.

Always active in politics, Sandy ran for the California State Assembly in 1976 and 1978, and she served as Vice Chair of the California Democratic Party from 1977-81. She was elected to the Claremont City Council in 1999 and served as Mayor from 2004 to 2006. She was on numerous non-profit boards throughout the years, including House of Ruth, Pilgrim Place, Claremont Senior Services, League of Women Voters, Claremont Heritage, and the Chamber of Commerce.

Sandy had an abiding passion for the fine and visual arts, especially the

works of Claremont's legacy and emerging artists. After serving on the Board of the Claremont Museum of Art, she was elected as the third president in 2010, leading the Museum through a period of rebuilding and revitalization. She was the visionary, with City Manager Tony Ramos and the City Council's support, who secured a new venue for CMA in the historic Claremont Depot in 2015.

Under her leadership, and after a successful fundraising campaign, two rooms in the Depot were renovated. The Museum formally opened with its first exhibition in the Depot in November 2016. Sandy stepped down as president in 2017, and she was honored at the Museum's Fall Gala in 2021 with the naming of the Atrium in her honor for her leadership and commitment to CMA.

Sandy continued to be a motivating force on the Board as the Museum increased its fundraising efforts and moved forward to convert the final two rooms in the Depot into stunning new gallery spaces, which opened in the spring of 2022. At that year's Gala, the Museum announced its new name, the Claremont Lewis Museum of Art, in honor of a generous endowment gift from Randall



Sandra Baldonado was honored at the 2021 Fall Gala. Photo by Reine Bouret.

and Janell Lewis. Sandy was proud and grateful that the Museum had accomplished so much in such a short time and that it now has a solid financial base to help secure its future.

The CLMA Board is incredibly grateful to Sandy, our indomitable and courageous President Emerita, who made it all possible and who will be missed beyond measure. The Baldonado family is planning a Celebration of Life for Sandy on Sunday, April 30, 3 pm, on the lawn at the Claremont Lewis Museum of Art. In lieu of flowers, the family suggests donations to the Sandra Baldonado Endowment at the Claremont Lewis Museum of Art.



L-R Elaine Turner with Sandy, an honoree at the Women of Vision Gala in 2018. Sandy greets Joella Mahoney at the 2015 Gala. Janet Myhre and Sandy at the premiere of *Design for Modern Living* in 2015. Photos by Reine Bouret and Catherine McIntosh.



PAUL
SOLDNER,
Untitled, c. 1972,
Raku fired ceramic.
Gift of Janette
Heartwood.



CLMA Collection Grows with Generous Gifts

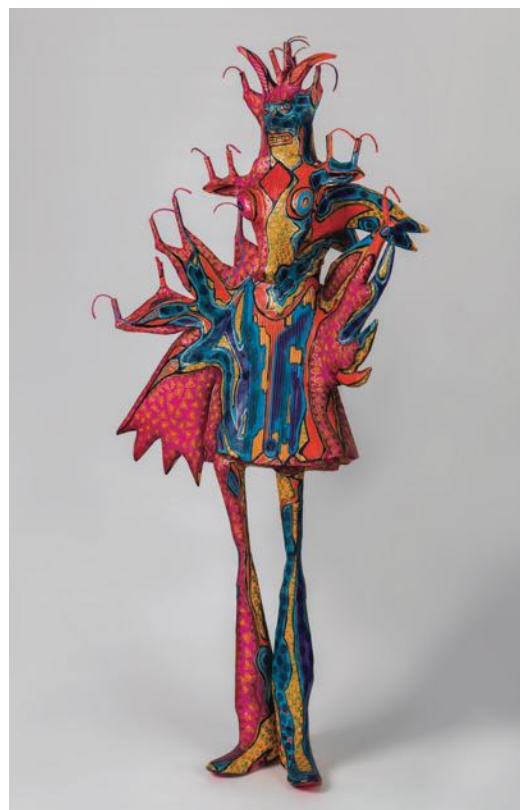
With a more substantial storage facility and newly built painting racks, the Museum accepted 60 pieces into the permanent collection in 2022. Generous donations from collectors, artists' families and current artists have been offered. Many of these works were included in the Claremont Collects exhibition and others are currently on display in the Museum.

An extensive selection of artworks from the collection of Woody and Judie Dike has been donated to CLMA on behalf of the Dike Family Trust. The donation includes dozens of paintings and drawings by Phil Dike and other artists and numerous ceramics by Claremont artists. The Acquisition Committee is in the process of reviewing these pieces and many are being added to the Museum's permanent collection. Other pieces will be included in our annual gala auctions to benefit Museum operations.

Dawn Arrowsmith was also very generous in donating 11 pieces by her late husband Roland Reiss including early paintings, several works from his miniature series and more recent floral paintings. Wonderful items have come from the families of artists such as Karl Benjamin, Paul Darrow, Jerry Rothman, Doug McClellan, and Jean Ames.

Many current local artists have also offered important pieces from their personal collections. In 2022 the Museum was pleased to accept works by David Armstrong, Dee Marcellus Cole, Steve Comba, Jeff Faust, Sumi Foley, Marciano Martinez, Jane Park Wells, and Georgette Unis.

We greatly appreciate these many generous gifts in support of CLMA and look forward to sharing these important works with the public in future exhibitions.



DEE MARCELLUS COLE, *Grandma Was a Cow*, c.2015, Mixed Media, Gift of the artist.
Photo by Cindy Dillingham.



JEFF FAUST, *One of My Maps*, 2022,
Acrylic on canvas. Gift of the artist.



PHIL DIKE, *Bird Flight #5*, 1964, and *Edge of the Sea*, 1969, oil on canvas. RICK PETTERSON, *Untitled (for Betty Dike)*, n.d., glazed stoneware. Gifts of Woody & Judie Dike on behalf of the Dike Family Trust.



PAUL DARROW, *Passage*, 2006, Mixed media. Gift of Eric Darrow. Photo by Cindy Dillingham.



ROLAND REISS, *Sunflowers at Midday*, 2013, oil and acrylic on canvas. Gift of Dawn Arrowsmith.



DOUG MCCLELLAN, *House series Game box #1*, 1983, Assemblage. Gift of the McClellan family.

2022 Museum Donors and Supporters



The Board of Directors of the Claremont Lewis Museum of Art sincerely thanks all our current members, marked with an asterisk (*), and donors who so generously supported the Museum during our year of celebration and expansion. Please note our growing list of donors who give in honor or memory of their friends and loved ones. In-kind donations of art and services are also greatly appreciated.

BENEFACTORS

(\$25,000+)

Family of Ligorio A. Calaycay,
Jr. MD
Randall & Janell Lewis*
Ruth & Joseph Reed
Foundation for the Arts

GOLD

(\$10,000 - 24,999)

Barbara Brown*
Patricia Lobello
Marguerite McIntosh*
Dr. Janet Myhre*
Marta Reents*
Charles Tuggle

SILVER

(\$5,000 - 9,999)

Catherine McIntosh*
Claremont Lincoln
University*
Joe & Georgette Unis*
Ahlene Welsh*

PATRONS

(\$1,000 - 4,999)

Susan M. Allen*
David & Julie Armstrong
Charles & Rita Bronfman
David & Mary Ann Brow*
Elaine Cheng Anderson
The Chetney Family*
Anne Cohen Ruderman, Glass
Alliance of Los Angeles
Marilyn Dale
Fine Arts Foundation
Don Gould & Rhonda Raider
Gould*
Gould Asset Management
Victoria & Jay Greening*
Jill Grigsby & Rett Bull
Susan Guntner*
Rebecca Hamm & David
Brock*
Haskell Fund
Sharon Hightower*
Janice & Larry Hoffmann*

Frank Hungerford & Jeanne Kennedy*
 Gary & Mi Chi Jensen*
 Sally Kaled*
 Charles T Kerchner*
 Kiwanis Club of Claremont Foundation
 John Kosta & David Ochroch
 Maggie Latimer & Frank Ramme
 Jon & Judith Liebman
 Susan Lominska & Jack Mills*
 Andrée M. Mahoney
 James Manifold & Margaret Russell*
 Valerie Martinez, VMA Communications*
 Sheri Nagel*
 Christopher & Carol Oberg*
 Lynn Priddy & Rick McGee*
 Randy & Rhonda Prout*
 Marilyn Mehaffie Ray*
 Karen & Michael Rosenthal*
 Rae Rottman*
 Robert Scudder*
 Sunil Shivaram & Amisha Gupta*
 Sarah Price Smizer
 State Farm
 Susan Steinhauer & Daniel Greenberg
 Louis Stern Fine Arts, Inc
 Sam Tuggle
 Elaine Turner*
 Kathryn & Randall Vickers MD*
 Mary & Fritz Weis*
 Bill & Jane Park Wells*
 Suzanne Wojcik
 Ryan & Melissa Zimmerman*

PREMIUM PLUS (\$250 - 999)

Anonymous
 Kirk & Colette Albanese
 Nancy & Peter Ambrose*
 Cristina Antonioli
 Maria (Zornes) & Hal Baker*
 Beth Benjamin & Ross Focke*
 Sharron R Bentley*
 Boeing
 Charlene Bolton & Mike McKenzie*
 Tom & Toni Bostick*

Tim Brayton & Deborah Waas Brayton*
 Aurelia & James Brogan*
 Nora & Mel Butler*
 Christopher Lee Campbell
 Lauren Cassatt*
 Colleen Christian
 The Claremont Colleges
 Pat & Peter Coye*
 Dawn Zammitt Crandall
 Kenneth Dale
 Heather Davis
 Diane de Lory Bonilla
 Florence Decurgez
 Martha & Rupert Deese
 Stephen P Deitsch*
 Susan Dowler & Jim Burke*
 John Faranda*
 Michael & Emily Fay
 Patti & David Funder
 Katie & Bob Gerecke
 Kirsten Gonzalez*
 Pamela Gould*
 Joan Hadley
 Suzanne Hall*
 Geoff T Hamill, Real Estate Broker*
 Marjorie L Harth*
 Jill Hartley Fulton*
 Judy Harvey Sahak*
 Danielle Haskell*
 Richard Haskell & Nancy Hamlet*
 Areta Herr
 Frieder & Grace Hochheim
 James Holden & Yi Shun Lai
 Heidi & Joe Hough
 Merrilee & Marty Howard*
 Steve & Sharon Huling
 Cj Jilek*
 Joanne & Dennis Keith*
 Mike & Connie Layne*
 Patricia Dillon & Maurice LeBlanc*
 James Likens & Christine Irons
 Monica Lynne Mahoney
 Tom Mansfield
 Bonnie Marx
 John C McCarthy Foundation*
 Donald McDonald*
 Karen & Russ Merris
 Linda & John Moore*

Steve & Ann Morgan*
 Candida Neal & Brian Desatnik*
 John & Karen Neiuber*
 Hal Nelson & Bernard Jazzar*
 Jerry Owens*
 Abby & Jack Parsons*
 Donald Pattison*
 Lissa & Dan Petersen*
 Ricky T Dove & Robert C Pozen
 Carole & Nick Quackenbos
 Jan Raithel & Stuart Kerridge*
 Reed Family Foundation
 Jane & John Reed*
 Elizabeth Reisman
 Charlotte Resch & John Niero*
 Dr. Robert & Diann Ring*
 Damian Ross
 Rotary Club of Claremont Foundation
 Audrey Rottman+
 Carlos & Pat Samuelson
 Susan & John Sasaki*
 Diane & Joe Schreiber*
 Bonnie & Gilbert Schwartz
 Linda & Herbert Scott*
 Phyllis Shainberg*
 Georgia Shannon*
 Ahmad Shariff Art Gallery*
 Perdita L Sheirich*
 Frank Silverstone
 Gloria Slosberg & Ed Babcock*
 Dennis & Cynthia Smith*
 Lisa Soiseth
 Jennifer Stark & David Berke*
 Mary & Stuart Stoddard*
 Vincent & Lelda Suez*
 Cindy Sullivan*
 David Svenson
 Janet & Robert+ Tranquada*
 Linda Troyer & Ray Wilson*
 Jack Tuggle & Molly Green
 Kurt Vandervoort
 Paul Kittlaus & Janet Vandevender*
 Barry Vantiger
 Ron & Christina Vera
 Lauren Verdugo
 Cindy Walkenbach*
 Paul & Maureen Wheeler*
 Kathy & Wayne Willhoft*

PREMIUM (\$100 - 249)

Anonymous
 David Abasta
 Arlene Andrew *
 Gretchen Augustyn*
 Sandra Baldonado*
 Linda Battram
 John & Heather Bohn*
 Reine Bouret*
 Dorcia & John Bradley*
 Susan B. Brinkama*
 Kim Bruce
 Guillermo & Irasema Calvillo*
 Michael Cheatham*
 Su Cheatham, Artist*
 Tzu Chen (Yi)
 Joel Cinnamon*
 Cynthia Clark*
 Shelley Clark*
 Dee Marcellus Cole*
 Catherine Conrad*
 Pat & David Darby*
 Michael Dargahi & Sheila McCarthy*
 Rich Deely & Amy Crow*
 Evelyn Diaz Brown*
 Ginger & Christine Elliott*
 Kristen Erickson Ceramics
 Stephen & Pauline Erickson*
 Kate Flannery
 Dan & Abby Flores
 Sumi Foley & John York *
 Pedro Garcia
 Gary Geraths & Joyce Hesselgrave
 Beth Ann Gerstein
 Gary & Gretchen Gilbert*
 Steve & Helaine Goldwater*
 Marc Gordon
 Debby & Don Griffin*
 Sally Carol Grogg
 Janet Gruman
 Carol Hanson
 Bob Bauer & Claudia Hemenway*
 Bryna & Carl Herbold*
 John Hill & Brenda Barham Hill*
 Juliet & Kelly Kane*
 David & Deborah Kekone*
 Roger & Jorjana Kellaway
 Pat Kelly

Louise & David Kestenbaum*
 Susan Kullmann*
 Gina Lawson Egan*
 Jed & Liz Leano*
 Jeffrey & Francine Light
 Patricia Lindberg & Charles
 Hepperle*
 Cheryl & Russ Loar*
 Adrienne Luce*
 John Machado & Eva Ramirez
 Bernie & Mary Ann Marshall*
 Ali Martinez*
 Lucinda McDade & John
 Lundberg*
 Karen McMillen
 Candice Mellor
 Mary Jane Merrill*
 Lynn & Kent Miller*
 Judy Moravitz
 Jane Moser*
 Emily Moultrie & Simon
 Brown
 Nina C. Munoz, Esq*
 Bette J Nichka*
 Sue & Tom Nuss*
 Cher & Alexandra Ofstedahl*
 Alice S. Oglesby*
 Allen Omoto & David
 Robinson
 Barbara Patch*
 Paula G. Pitzer*
 Michelle & Joseph Porreca
 Oliver Riley
 Donald Robinson
 Nancy Lee Ruyter & Frank
 Zacharias*
 Lauren Santell
 Lynn Sarf & Richard Watkins*
 Catherine A Schulte*
 Barbara Senn*
 Dr Billie Sessions
 Linda & Dirk Silva*
 Donald Smith
 Diane Stielstra & Donn Fry*
 Gabriela Tepper
 Gracesol & Stephen Thomas
 Stephanie Varnon-Hughes
 Wade Made*
 Teddie & Kent Warner*
 Dr. Arthur Weinstein & Laura
 Zuckerman*
 Darcy & Matt Weis*

Judy & John Whiting*
 Ruthellyn Whittington
 Allan Wicker & Edna Elnar-
 Wicker
 William & Carol Wiese*
 Wrightwood Arts Center
 Andrew W Zanella*

SUPPORTERS

(\$1 - 99)

Anonymous
 Kim Acosta*
 Sharon Algozer & Joseph
 Vigh*
 Mimi Alvarez & Lupe Zavala*
 Georgeann Andrus*
 Bill & Barbara Ascher*
 Deborah & Michael Barker-
 Benfield*
 Michael & Roberta Baumann*
 Wendy Bayer
 Jo Beckwith*
 Carol Bekendam *
 Gorman Bentley & Jeff Lewis*
 Kim Bolander*
 Laura & Bo Bollinger *
 Ingrid Borgards
 Jane Boyer*
 Christine Bozar*
 Bill Breer*
 Ben & Karen Bull*
 Judy Burwell*
 Kathy Callecott*
 Robert W. Caragher*
 Studio C*
 Brooks & Rita Cavin*
 Susan & Michael Cheatham*
 Alba Cisneros*
 Jean Collinsworth*
 Judith M. Craig*
 David & Valerie Cressy*
 Betsy Crighton*
 Amy Croushore*
 Nancy DeDiemar *
 Ellen Dinerman, Artist
 Beverly Dorst*
 Charles & Ann Doskow*
 Gail Duggan*
 Jo Lynn Edmiston
 Myrna Elliott*
 Kathleen Fehr*
 Helen & Gary Feller*
 Dace Felton*
 Sheryl Fontaine*

Alma Ford*
 Sylvia Frey & Jerry Irish*
 Dennis & Denise Garcia*
 Frank & Cathy Garcia*
 Penny Garris*
 Quincey Grace*
 Suzy Graham & John
 Campbell MD*
 Michael & Susan Gregory*
 Shaunna Gygli*
 Karen Hagen*
 Susanna (Tana) Hammond*
 Steven Harrison & John
 Ibson*
 Martha Hartford*
 Barbara Haveman & Morris
 Powazek*
 Butch Henderson
 Lydia Henry & John
 Dominguez*
 Nicki Heskin*
 Susan Traniello Hines*
 Eric Huizar*
 Aleta Jacobson, Artist*
 Laura Jaoui*
 Aundre Johnson*
 Janet S Johnson*
 Judy Johnstone*
 Julia Karet*
 Sue & Jim Keith*
 Kimberly Kittson Morris &
 Maya Morris*
 Deborah & Michael Klein*
 Jacqueline & Bob Knell*
 Carrie & Paul Knoll*
 Dr Brian & Patricia Koffman*
 Joyce Kohl*
 Cheryl & Jacek Kugler*
 Lori Evans Lama & Steve
 Lama*
 Evie Lazzarino*
 Ruby Leavitt*
 Brown Lethem*
 Steven Llanusa & Glenn Miya*
 Karen Lystra & John Sturman*
 Susan & Brent Maire*
 Charlene Martin*
 Paula Martinez*
 Mary Marvin & Paul
 Gronseth*
 Meg Mathies & Ed Copeland*
 Richard & Jennifer
 Mawhorter*
 Cynthia Maxwell

Samara McCartney & Curtis
 Dale*
 Jean & Mike McKenna*
 Georgia McManigal*
 Greg Mefferd*
 Veronica Michalowski*
 Diana Miller & Cathy Curtis*
 Donna Marie & Frank Minano*
 Sally Monastiere*
 John & Carolee Monroe*
 James Mulligan*
 Barbara Musselman*
 Shirley & John Nagelhout*
 Jane O'Donnell*
 Jenifer Onstott & Merrill Ring*
 Revs Carolyn & Tom Owen-
 Towle*
 John & Laurie Peel*
 Nancy Pefley*
 Frances Pollock*
 Don Pollock*
 John & Diane Powell*
 Joan Presecan
 Elizabeth M Preston MAT*
 Robbert Flick & Susan
 Rankaitis*
 Patricia Richardson*
 Dina & Dan Romero*
 Dr. Jeri Roth*
 Marilyn Rudin *
 Carol Rundback*
 Enrique Salas-Limon &
 Bronwyn Seward Limon*
 Karen Salter-Moss & Steve
 Moss*
 Isabel Sanchez & Tony
 Esposito*
 Joyce Sauter*
 Sarah Schmidt*
 Anne Seltzer*
 Evelyn Senior*
 Eileen Senner*
 Tony & Flower Sheets*
 Amazon Smile
 Daryl Smith & Barbara
 Bergmann*
 Suzan Smith
 Phylise Smith & Doug
 Pearsall*
 Kathy W. Spear & Hortensia
 Muniz*
 Yael Steinfeld*
 Pat & Henry Stewart*
 Kate Stoever*

Alexandre & Amelia Sun*
 Jamie & Stephani Sutherland*
 Suttner Family*
 Judith & David Tanenbaum*
 Bill McAllister & Lola Taylor*
 Patricia Taylor*
 Zoe TeBeau
 Cathy & Jerry Tessier*
 Chris Toovey*
 Lillian Torres*
 Robin & Ludd Trozpek*
 Ted Trzyna*
 Karen Vail
 Dwight W Vogel*
 Mark & Carla von Wodtke*
 Carolyn Whitham*
 Kathleen O'Brien Wicker*
 Conrad Wilkinson*
 Linda Lee Worlow*
 Janet Wright & Roy Genger*
 Ted Zehfuss*
 Dr. & Mrs Robert Zondervan*

BUSINESS PARTNERS (\$250+)

Dr. Laura Burgis, The Human
 Values Center
 Geoff T Hamill, Real Estate
 Broker, Wheeler Steffen
 Sotheby's International
 Realty
 Valerie Martinez, VMA
 Communications
 Ahmad Shariff Art Gallery
 Ryan Zimmerman,
 Wheeler Steffen Sotheby's
 International Realty

HONORARY AND MEMORIAL GIFTS

Honor of Sandra Baldonado
 Arlene Andrew
 Marilyn Dale
 Ginger & Christine Elliott
 Steve & Helaine Goldwater
 Butch Henderson
 Sharon Hightower
 Sue & Jim Keith
 Mary Jane Merrill
 Nina C Munoz, Esq
 Alice S Oglesby

Lissa & Dan Petersen
 Joan Presecan
 Randy & Rhonda Prout
 Dr Robert & Diann Ring
 Suzan Smith
 Sarah Price Smizer
 Cindy Sullivan
 Zoe TeBeau

Honor of Kéké Cribbs
 Christopher Lee Campbell
 Bonnie & Gilbert Schwartz

Honor of Helaine Goldwater
 Arlene Andrew
 Sandra Baldonado
 Sue & Jim Keith
 Mary Jane Merrill
 Lissa & Dan Petersen
 Joan Presecan
 Randy & Rhonda Prout
 Dr. Robert & Diann Ring
 Suzan Smith
 Cindy Sullivan
 Teddie & Kent Warner

*Honor of Randall & Janell
 Lewis*
 Victoria & Jay Greening

*Honor of Marguerite
 McIntosh*
 Victoria & Jay Greening

Honor of Marty Prout
 Karen Vail

Honor of Diann Ring
 Arlene Andrew
 Sandra Baldonado
 Marilyn Dale
 Steve & Helaine Goldwater
 Butch Henderson
 Sharon Hightower
 Alice S Oglesby
 Lissa & Dan Petersen
 Randy & Rhonda Prout
 Cindy Sullivan

Honor of Mary Weis
 Dr. Eric T Haskell, Haskell
 Fund

Memory of Ruth & Thomas Hamill

Geoff T Hamill, Real Estate
 Broker

Memory of Robert & Laura Palmer

Dr. Billie Sessions

Memory of Eva Von Steidl
 Vlasta & Alan Sutovsky

IN-KIND CONTRIBUTIONS

David & Julie Armstrong
 Dawn Arrowsmith
 Sandy Baldonado
 Holly Beckner
 Benjamin Living Trust
 Reine Bouret
 Art Braeger
 Paul Brayton
 Barbara Brown
 Bullseye Projects
 Elizabeth Carr
 Herbert & Carlynn Christian
 Joel Cinnamon
 Alba Cisneros
 Claremont Courier
 Claremont Craft Ales
 Claremont Fine Arts
 Claremont Print & Copy
 Dee Marcelus Cole
 Steve Comba
 Eric Darrow
 Carolyn Denning
 Woody & Judie Dike on behalf
 of the Dike Family Trust
 Diane Divelbess
 Marodeen Ebrahimzadeh,
 Square i Gallery
 Jeff Faust
 Sumi Foley
 Dennis Garcia
 Gary Geraths
 Henry Gonzalez
 Susan Guntner
 John M Harris PhD
 Janette Heartwood
 Sharon Hightower
 Frank Hungerford & Jeanne
 Kennedy

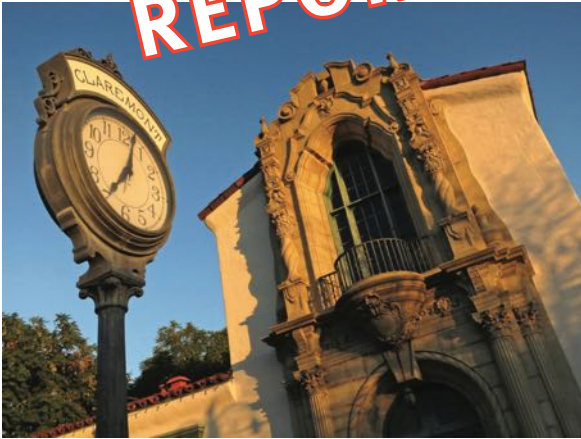
Last Name Brewing
 James Lehman
 Marciano Martinez
 Mark McClellan, The
 McClellan Family
 Catherine McIntosh
 Over the Top Specialty
 Rentals
 Robert W. Ames Estate
 Plume Ridge Wine Imports
 Lisa Pruitt
 Dina & Dan Romero
 Damian Ross
 Rae Rottman
 Ann Stromberg
 Jim Strombotne
 Vlasta & Alan Sutovsky
 David Svenson
 Elaine Turner
 Georgette Unis
 Rebecca Ustrell
 Vidanta Resorts
 Casey Wasserman Living
 Trust
 Bill & Jane Park Wells
 Ahlene Welsh
 Wheeler Steffen Sotheby's
 International Realty
 Ryan & Melissa Zimmerman

*Every effort was made to
 ensure accuracy in the
 preparation of this list of
 donors. If there are any
 questions, please contact
 CLMA.*

CLAREMONT LEWIS
MUSEUM OF ART

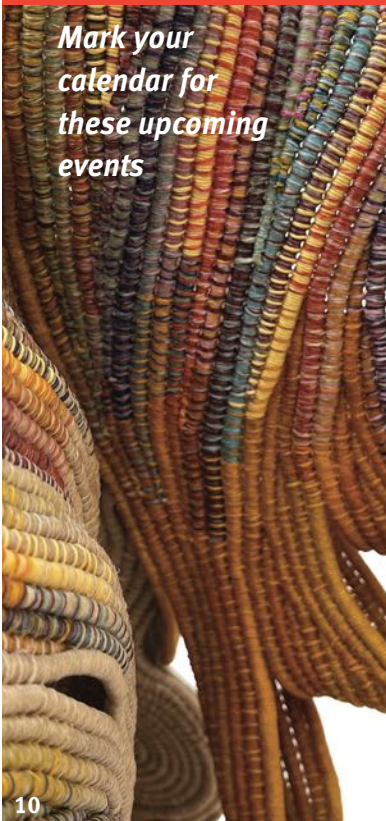
P.O. Box 1136, Claremont, CA 91711

ANNUAL REPORT



CLMA CALENDAR 2023

Mark your
calendar for
these upcoming
events



Conversation About Trees Program

Saturday, April 1, 4:30 pm

Art Walk with Andrée Mahoney

Saturday, April 1, 6-9 pm

ARTStation Family Art Activities

Sunday, April 2, 12-4 pm

Sandra Baldonado Celebration of Life

Sunday, April 30, 3 pm

StART It Up! Exhibition

May 5-7, 12-4 pm

Ferne Jacobs Opening Reception

Saturday, May 20, 6-8 pm

Fall Gala

Saturday, September 23, 5:30 pm

Ken Gonzales-Day Opening Reception

Saturday, October 7, 6-9 pm

Padua Hills Art Fiesta

Sunday, November 5, 11 am- 4 pm



RR | **RYAN R.
ZIMMERMAN**

*Trust the experience of your
Claremont native realtor*
Broker Associate, ABR, GRI, SRES, e-Pro

Professional Photography and
3D Tour, Highest Quality Marketing,
Extensive Listing Exposure,
1-on-1 Service, Proven Results

909.447.7707

Ryan@RRZimmerman.com

Top 3 Producing Claremont Agent: 2013-2022

**Wheeler
Steffen**

Sotheby's
INTERNATIONAL REALTY